

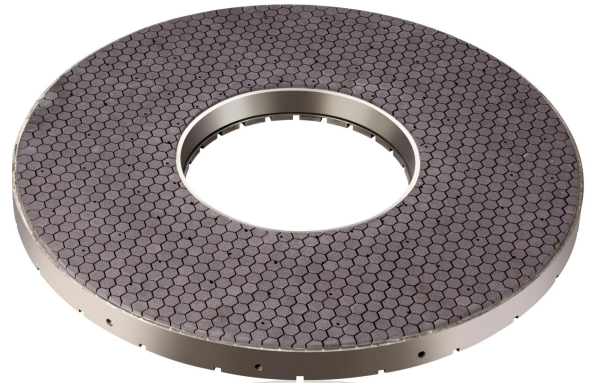
Double disc wheel introduction and application



Introduction

DSG grinds 2 sides together, it reduces the non-cutting time dramatically, and can achieve automatization and high efficient grinding after installed with automatic measuring device.

Compared with single side grinding, the surface to be ground in DSG is also datum face, this can avoid the superposition of positioning error and machining error, so that we can get better the flatness and parallelism for workpieces.



Applicaton

hydraulic industry: vale plate, pump casing, sealing parts

AC, fridge compressor industry: air cylinder, slide vane, piston, spacer

Auto industry: stator, rotator, sprocket, oil pump and nozzle, gasket

Ceramic industry: aluminum oxide ceramic, quartz

Industrial plastic industry: PPS, PEEK

Cutting tool industry: carbide insert, PCBN insert, cermet insert



Case

Wheel: 2A2T Ø1250-43T-552ID-3X

Workpiece : Spacer Ø100

Workpiece material : Sintered material

Hardness : 35HRC

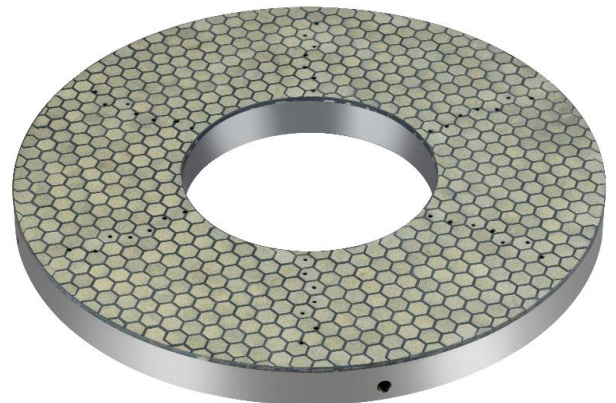
Stock removal: 0,5mm

Coolant: oil

Pressure: 500 to 1000daN

Wheels speed: 100rpm

Roughness: 0,6Ra



www.egrindwheel.com

Henan E-Grind Abrasives Co., Ltd

1841&1842 Wanda Plaza,

171#, Zhongyuan Road,

Zhengzhou, China

Tel: +86-371-68616866

Fax: +86-371-68616868

Efficient Grinding Solutions